

Bilkent University
Department of Electrical and Electronics Engineering
EEE 313 Electronic Circuit Design

Experiment 2
Small-Signal Analysis of Diode Circuits

Theory

The aim of this experiment is to investigate the diode small-signal AC model that was developed in class. For a forward biased diode, the small-signal resistance is given by

$$r_d = \frac{nV_T}{I_{DQ}}$$

where V_T is the thermal voltage, n is the ideality factor, and I_{DQ} is the quiescent (DC) diode current.

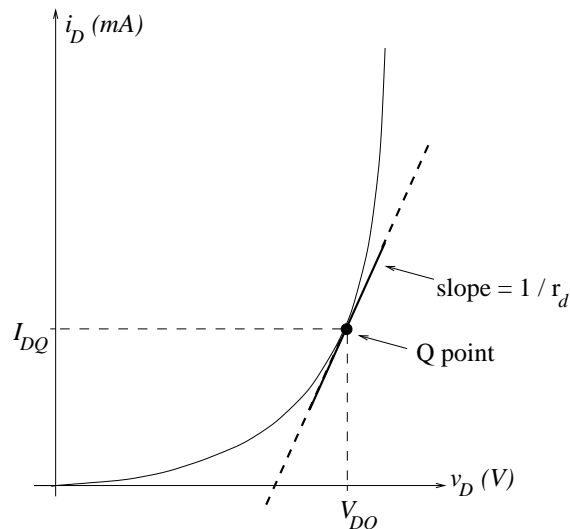
The theory behind this experiment is outlined in Section 1.4 in the textbook. The i - v characteristics of a pn junction diode is

$$i_D = I_s \left[e^{v_D/nV_T} - 1 \right],$$

where the ideality factor n is a number between 1 and 2. By definition, the small-signal resistance is the inverse of the slope of this i - v curve evaluated at the Q-point. In other words,

$$\frac{1}{r_d} = \left. \frac{d}{dv_D} \left[I_s \left[e^{v_D/nV_T} - 1 \right] \right] \right|_{v_D=V_{DQ}} = \frac{I_s e^{V_{DQ}/nV_T}}{nV_T} \simeq \frac{I_{DQ}}{nV_T},$$

since $I_{DQ} \simeq I_s e^{V_{DQ}/nV_T}$ for a forward biased diode.



The diode small-signal AC model is a linear approximation to the exponential diode $i-v$ curve around a DC operating point in the forward-bias region. Consider a diode in a circuit. The presence of the diode with its nonlinear $i-v$ relationship poses a problem in analyzing the circuit. In general, the diode voltage and current may have both DC and AC components. The small-signal AC model may be used if

- (i) the diode is biased to a DC Q-point in the forward-bias region and
- (ii) the AC component of the diode voltage is small relative to nV_T .

The DC diode current and voltage (the Q-point) may be found using either a numerical method to solve the exponential $i-v$ relationship or a simple piecewise linear model. Once the Q-point is found, AC variations around that Q-point can be considered to be approximately linear, provided they are small in amplitude. The AC diode current can then be considered to be linearly related to the AC diode voltage, and hence the diode can be modeled as a resistor with a resistance that is equal to the inverse of the slope of the $i-v$ curve at the Q-point. The small-signal AC model begins to break down if the AC voltage across the diode exceeds nV_T . In this case distortions due to the diode nonlinearity become noticeable in the circuit.

Preliminary work

Review Section 1.4 in the textbook.

In the laboratory, you will investigate the following circuit.

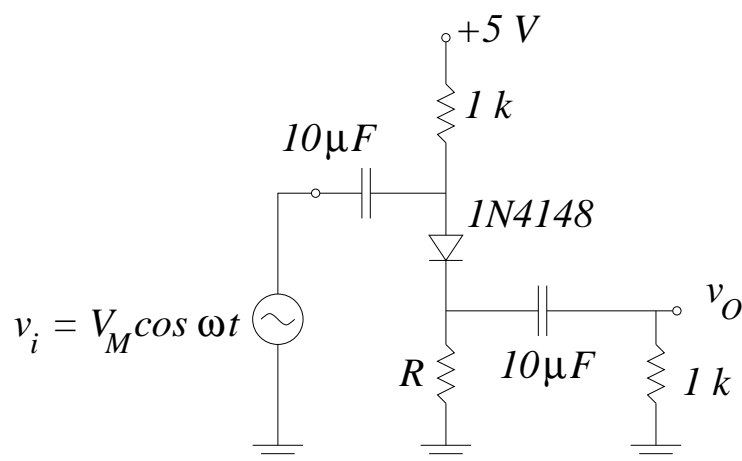


Table 1: Values of R to be used in the experiment for different sections.

Section	R Values
Section 1 (Monday Session)	$R = 4.7 \text{ k}\Omega$, $R = 68 \text{ k}\Omega$
Section 2 (Friday Session)	$R = 5.6 \text{ k}\Omega$, $R = 82 \text{ k}\Omega$
Section 3 (Wednesday Session)	$R = 3.3 \text{ k}\Omega$, $R = 47 \text{ k}\Omega$

Depending on your section, you are going to use two different values of R , which are given in Table I. These R values will bias the diode at two different Q-points in the forward-bias region. The small-signal resistance r_d will therefore be different for different values of R .

For each value of R , perform the following steps. Assume that the coupling capacitors are short circuit at the frequency of operation. Also assume that the input voltage signal v_i is small enough so that $v_d \ll nV_T$. The ideality factor of 1N4148 diodes is 2.

1. Find the quiescent diode current I_{DQ} using a piecewise linear model with $V_\gamma = 0.6 \text{ V}$.
2. Determine the small-signal resistance r_d and draw the small-signal AC model for the circuit.
3. Find the output voltage v_o as a function of the input voltage v_i and determine the small-signal voltage gain $A_v = v_o/v_i$.
4. Approximately determine the largest input voltage amplitude for which the small-signal approximation can be expected to work. To do this, you may calculate the largest value that V_M can take for $v_d \simeq nV_T$ to be satisfied.

Design problem: Determine the value of R that will yield a small-signal voltage gain $A_v = 0.70 \pm 0.03$, i.e., to have $0.67 < A_v < 0.73$. In addition, the DC diode current should be less than 3 mA. Use standard (5% tolerance) resistor values only. After finishing your design, simulate your circuit using PSPICE: The diode is listed in PSPICE library as D1N4148. Use VSIN as the AC voltage source. First calculate all the DC voltages and currents, and compare the Q-point with your design value. Then use Time Domain Analysis to calculate the small-signal voltage gain using $V_M = 20 \text{ mV}$ and $f = 5 \text{ kHz}$. Make sure you look at a time window before which all transients have died away. Increase V_M up to 400 mV and repeat. Comment on your simulation results.

Experimental work

Construct the circuit given in the preliminary work section, using the smaller value of R according to your lab session (3.3 k Ω , 4.7 k Ω or 5.6 k Ω). (Note that the capacitors that you use here are electrolytic capacitors. Make sure to connect the positive terminal of the capacitor towards the DC power supply.) Set the signal generator frequency to 5 kHz (sinusoidal output) and the amplitude to 80 mV peak-to-peak ($V_M = 40$ mV). With relatively small voltages like these, make sure to use normal triggering and adjust the trigger level on the oscilloscope carefully.

1. Turn off the signal generator. Measure the DC voltage drop (with a multimeter) across the 1 k Ω resistor that is connected to the DC supply. From your measurement, determine the quiescent diode current I_{DQ} and make sure that the diode is biased properly. Measure the DC voltage drop across the diode (V_{DQ}) as well.
2. Turn on the signal generator. Observe the input and output voltage waveforms on the oscilloscope on two separate channels. Measure the small-signal voltage gain A_v . Compare this with the value calculated in your preliminary work.
3. Increase the signal generator amplitude (V_M) until you begin to see distortion at the output (output no longer sinusoidal). Note the input voltage when this occurs.
4. Put the oscilloscope into XY-mode to observe and record the input-output graph of this circuit. Increase the input voltage to make sure that you see where the linear approximation breaks down. (It helps to define the origin of this graph by reducing the input voltage to zero first, and then move the resulting bright dot to the center of the screen.)

Repeat the above steps for the larger value of R according to your lab session (47 k Ω , 68 k Ω or 82 k Ω). Compare your results and observations with the smaller value of R case.

Repeat the above steps for the R value that you calculated in your design. Does your circuit meet the design requirement that $A_v = 0.70 \pm 0.03$? If not, try to figure out the problem, and redesign and/or reconstruct your circuit.

Increase the signal generator amplitude to 800 mV peak-to-peak ($V_M = 400$ mV). Compare the output waveform with your PSpice simulation results.