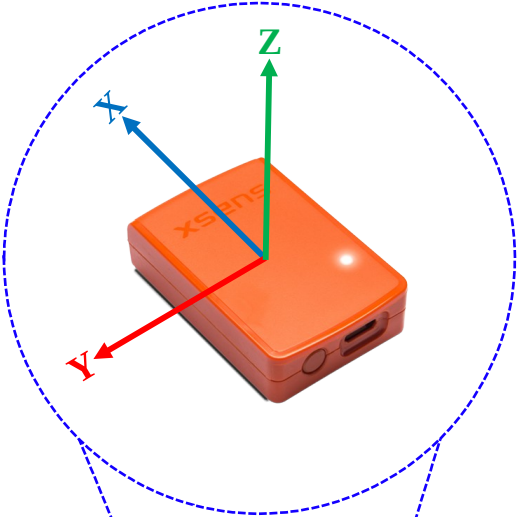
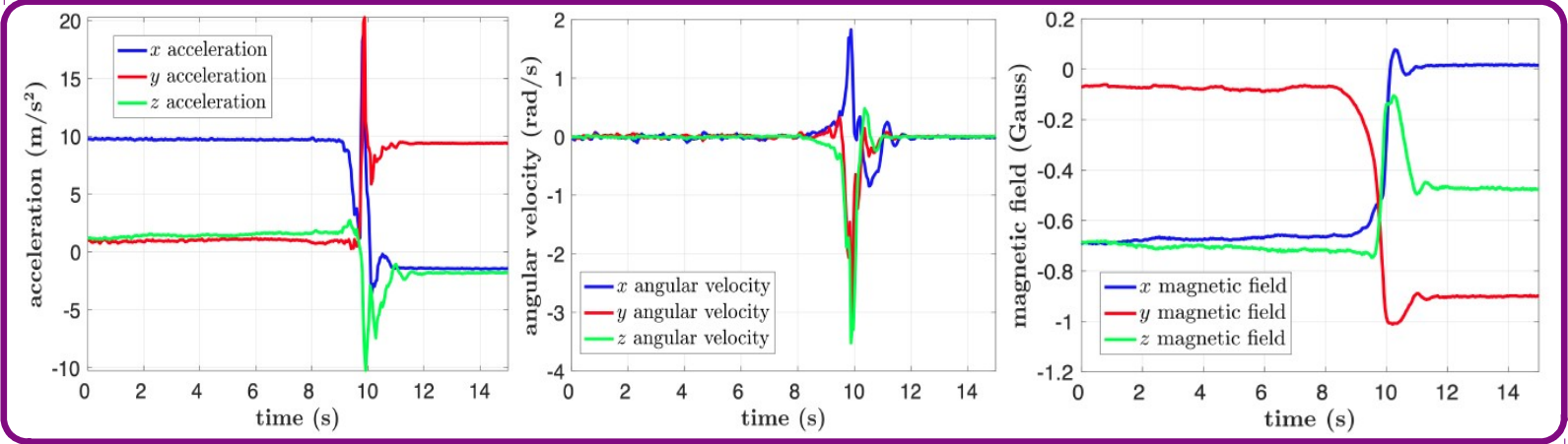
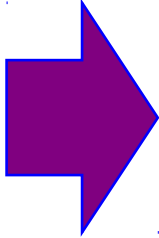


motion sensor unit worn on the waist



raw data acquisition



typical fall signals



Fall-Direction Classification

feature extraction

min, max, mean of
acceleration, angular
velocity, magnetic field
in x, y, z directions



27 simple
features



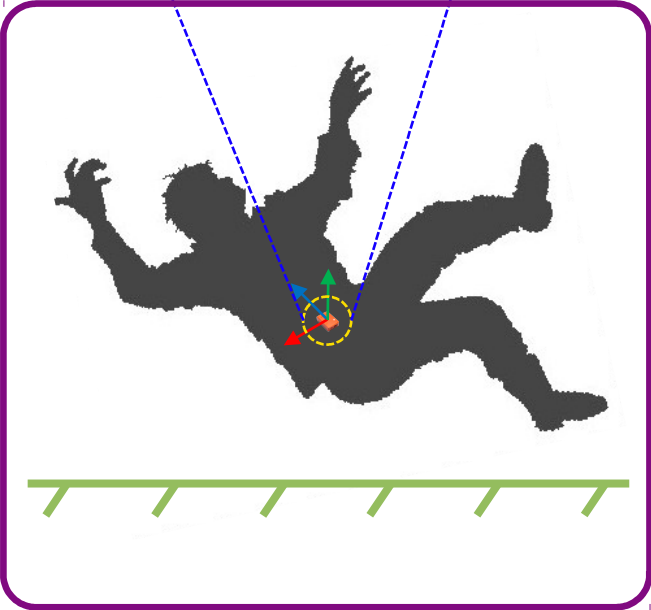
machine learning

BDM, LSM, *k*-NN,
ANN, SVM, DTC, RF,
AdaBoost classifiers



fall direction

- forward
- backward
- right
- left
- undefined



fall event

RESULTS

- Conducted robustness analysis that includes falls with undefined directions, not in the training set.
- Above 96% fall-direction classification accuracy is achieved.
- Classification can be performed in near-real time (<5 ms).